

## Applications

- Shallow Water
- Cable / Pipeline / Umbilical Trenching
- Cable / Pipeline / Umbilical Deburial
- Freespan Rectification
- Backfilling & Burial
- Jack-up Spudcan Clearing & Cleaning
- UXO & Salvage Deburial
- Rock Dump & Drill Cutting Removal
- Harbour Clearance
- Subsea Structure Deburial and Access

## Capabilities

Max RS2 Jet Flow	4,000 L/s
Max RS1-LD Jet Flow	1,300 L/s
Max RS2 Jet Pressure	60 kPa
Max RS1-LD Jet Pressure	140 kPa
Minimum Operating Depth	2.5 m

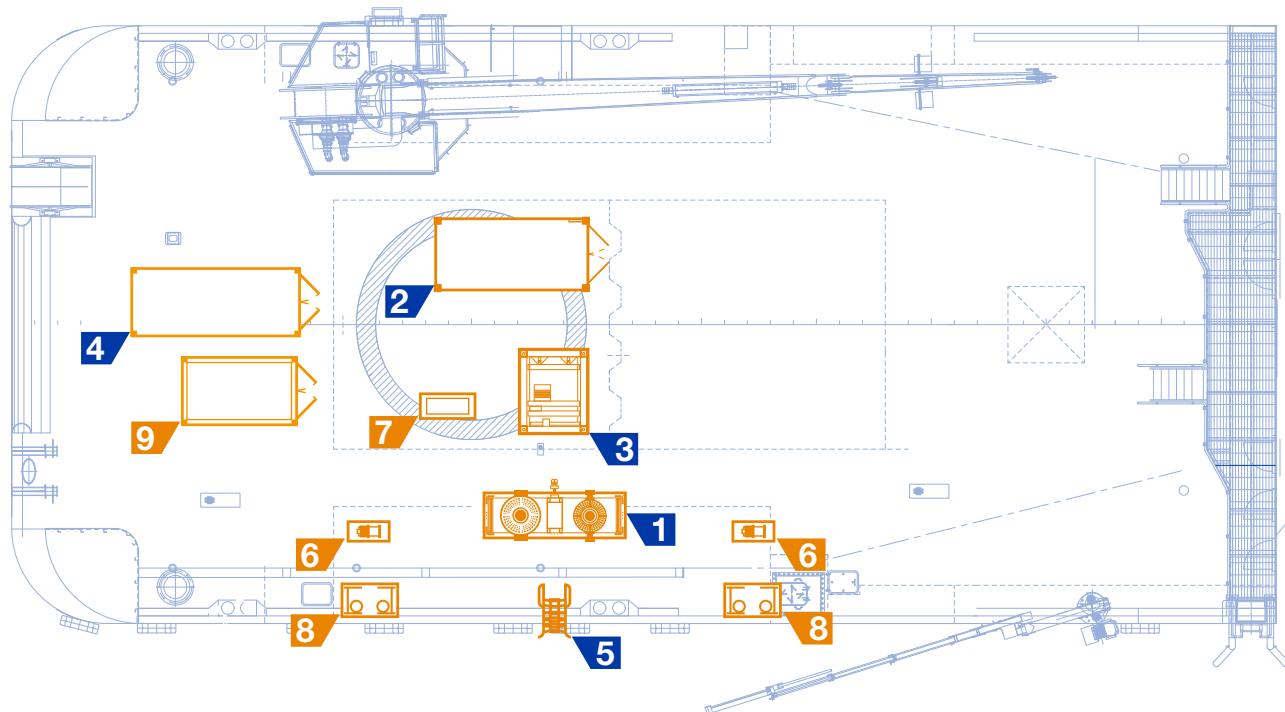
## Benefits

- Jet trenching solution for cohesive and noncohesive soils
- Asset safe, non-contact operation
- Highly qualified & experienced operators
- Real time sonar monitoring of service
- 24 hour Engineering support
- Tailored Hybrid Jet Trenching Solutions
- Designed, manufactured and maintained in-house by Rotech Engineering

## Personnel

- 6 Rotech operators for 24hr operations

## Example RS1LD-2 Equipment Spread



### Key

No.	Item	Dimensions (m)	Weight (kg)
1	RS1LD-2 Tool	5.40 x 1.83 x 2.25	10,000*
2	Twin Tool HPU	6.10 x 2.45 x 2.6	16,000
3	Hydraulic Umbilical Winch	3.00 x 2.40 x 2.60	11,000
4	Spares Container (Rotech)	6.10 x 2.45 x 2.90	12,000
5	Umbilical Chute	2.9 x 0.84 x 1.17	1,000
6	Hydraulic Deck Tugger (optional)	1.00 x 1.16 x 0.68	576
7	Tugger HPU (optional)	1.50 x 0.80 x 1.62	1,000
8	Universal Roller Fairlead (optional)	0.90 x 0.25 x 0.65	220
9	Control Cabin (optional)	3.97 x 2.44 x 2.90	5,000

\* All weights are approximate and may vary depending on exact configuration

V1

For over three decades Rotech have pioneered the development of cutting edge subsea Controlled Flow Excavation (CFE) technology. A dedication to innovation has seen Rotech continually evolve and enhance our specialised equipment to meet demand and deliver for the needs of many major clients in the subsea oil & gas and energy sectors.